



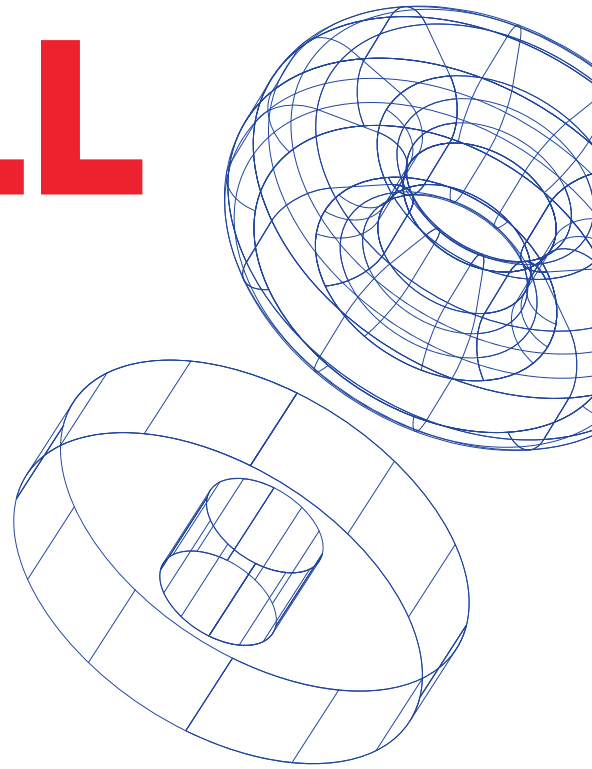
PREBECC
COMPANY LIMITED
WE BUILD YOUR PLANT

COMPANY PROFILE





WHAT WE WILL TELL



1—

WHO ARE WE?

2—

**PREBECC
BOILER SERVICE EXPERT**

3—

SERVICE OFFERINGS

4—

WHY CHOOSE PREBECC?

5—

OUR REFFERENCES

Since 2018, PREBECC, formerly known as Hiwin Mechanical Engineering, has been a manufacturer of industrial mechanical equipment. After 6 years of operation, PREBECC has developed and focused deeply on design calculation, manufacturing engineering, boiler assembly, pressure equipment, industrial piping, steel structures, etc., to meet the specialized requirements of manufacturers and end users.



MISSION

Providing the best technical solutions to manufacturers and end users for industrial equipment such as: boiler systems, pressure vessels, piping, and steel structures.



VISION

Becoming one of the top 5 companies in Vietnam in providing advanced technical solutions recognized worldwide and domestically for heavy industrial equipment.

WHO

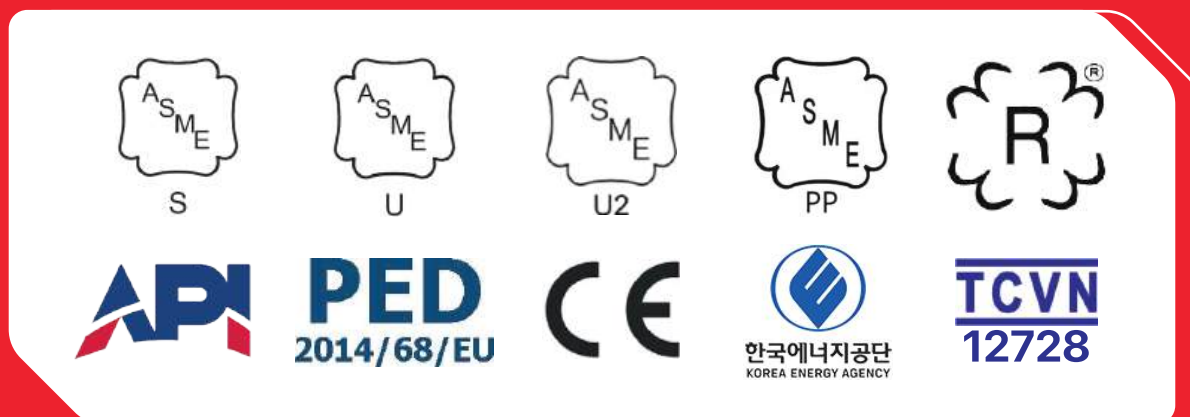
ARE

WE?





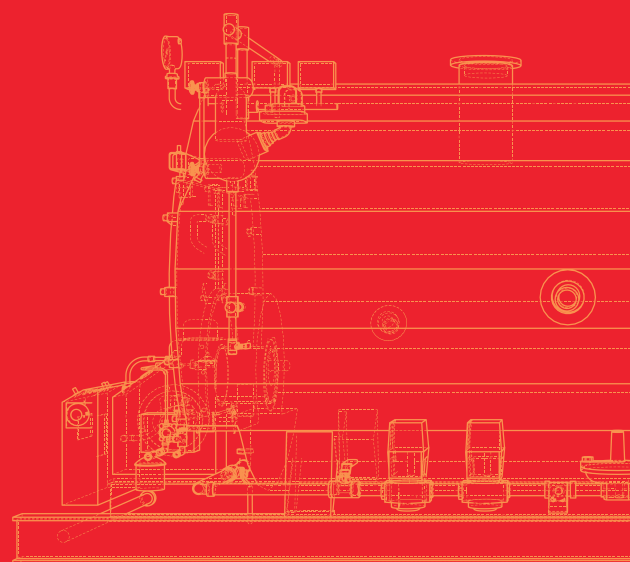
Vietnamese business pioneer in providing services according to International certification:



Application of Specialized Design and Simulation Software



BOILER SERVICE EXPERT



SERVICE OFFERINGS





What steps can we take to ensure your boiler system meets the standards for

QUALITY, EFFICIENCY, AND SAFETY?

ENGINEERING DESIGN



PFD and P&ID design

3D Simulation

Strength Calculation

Shop Drawing

Our expertise in both design calculations and certification processes ensures a seamless path from concept to certification.



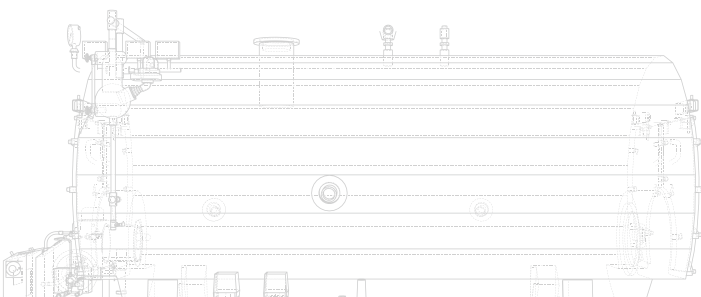
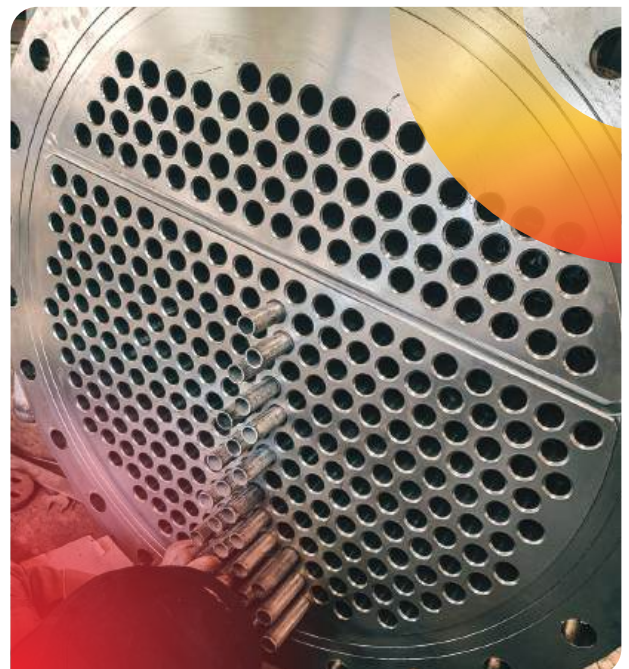
AUDIT & SUPERVISION

**PRODUCTION
SUPERVISION**



ENGINEERING AND CONSTRUCTION

**THE INTEGRATED PROCESS
FEATURES EQUIPMENT FABRICATION
AND INSTALLATION POST TECHNICAL
APPROVAL AND PROCUREMENT.**



PROJECT MANAGEMENT

DEFINE PROJECT OBJECTIVES

SCHEDULE PLANNING

RESOURCE ALLOCATION

BUDGET MANAGEMENT

PROGRESS AND QUALITY MONITORING

MAINTENANCE



**BOILER & EQUIPMENT
INSPECTION**



**ENERGY SAVING
SOLUTIONS
CONSULTATION**



**SAFE OPERATION
TRAINING**

SERVICE

PERIODIC

**UNEXPECTED/
INCIDENT**

ON-DEMAND

ENGINEERING DESIGN



Our team of experts specializes in the calculation, design, evaluation, and certification of boiler systems according to the rigorous standards.

ASME Section I, S Stamp Power Boiler

ASME Section VIII Div. 1, Div. 2, U, U2 Stamp: Pressure Vessel

ASME B31.1, Power Piping

API 650 Welded Tank for Oil Storage

API 620 Larger Weld, Low Pressure Storage Tank

PED 2014/68/EU Pressure Equipment Directive, CE-MARKING

EN 12952 Water Tube Boilers

EN 12953 Shell Boilers

EN 13445 Unfire Pressure Vessels

EN 13480 Metallic Industrial Piping

KS B 6753 Power Boiler (Korea Standard)

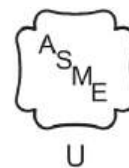
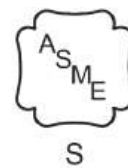
KS B 6750 Pressure Vessel

TCVN 12728 National Regulation for Boiler

AISC 360-16 Steel Structure Building

EN 1090 Steel Structure and Aluminium Structure

EN 1990 Euro Code Structural Design

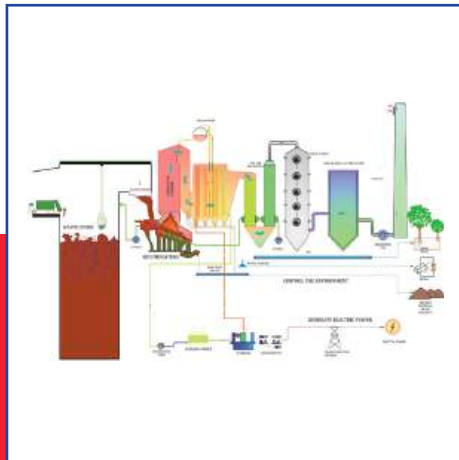


한국에너지공단
KOREA ENERGY AGENCY

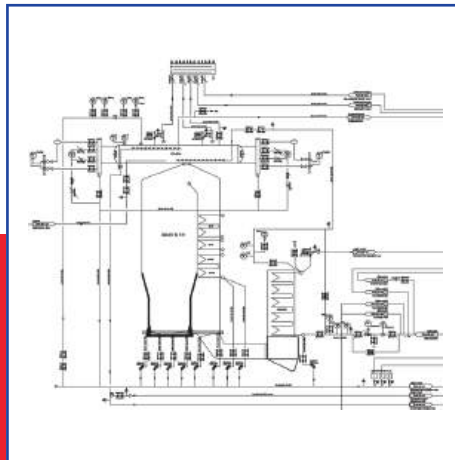


STEAM BOILER

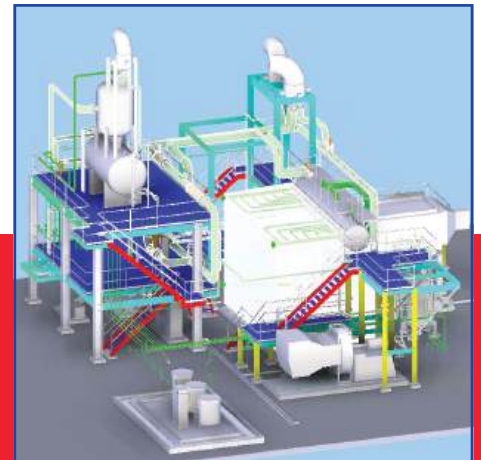
We ensure that every aspect of the design meets or exceeds regulatory requirements, prioritizing safety, efficiency, and reliability.




PROCESS FLOW DESIGN

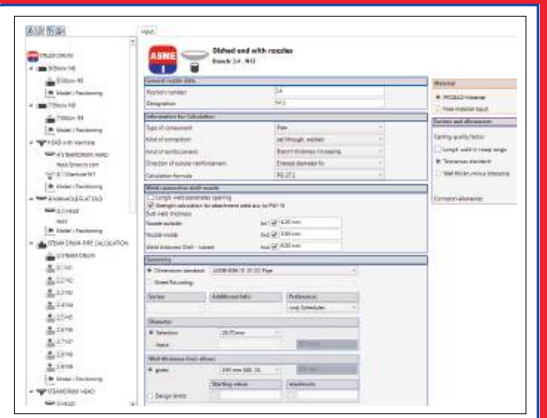


P&ID DESIGN

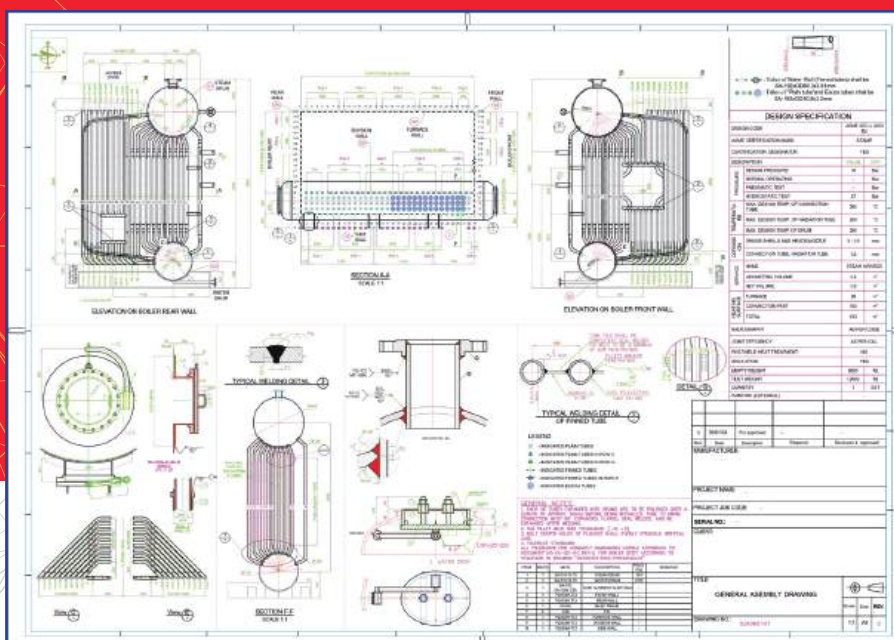


3D MODEL SIMULATION

 PROBAD - Module ASME I (10/23) PROBAD 2023 - © SIGMA Ingenieurgesellschaft mbH Company: Doc. No.: Job No.: Serial No.:					
2. STEAM DRUM-PIPE CALCULATION Results: ASME BPVC Section I: Rules for Construction of Power Boilers, Edition 2023 Pressure part: Cylindrical shell with nozzles					
Pos. No./Component	Standard	Dimensions	Mat. name	Type/Grade	Seq.No.
2 / STEAM DRUM	SA-20 07/23	946.00 mm x 16.00 mm	SA-516	70/K02700	
2.1 / N1	ASME-B36.10 01/18	33.40 mm x 4.55 mm	SA-106	B/K03006	B1
2.2 / N2	ASME-B36.10 01/18	33.40 mm x 4.55 mm	SA-106	B/K03006	B2
2.3 / N3	ASME-B36.10 01/18	114.30 mm x 8.56 mm	SA-106	B/K03006	B3
2.4 / N4	ASME-B36.10 01/18	114.30 mm x 8.56 mm	SA-106	B/K03006	B4
2.5 / N5	ASME-B36.10 01/18	114.30 mm x 8.56 mm	SA-106	B/K03006	B5
2.6 / N6	ASME-B36.10 01/18	114.30 mm x 8.56 mm	SA-106	B/K03006	B6
2.7 / N7	ASME-B36.10 01/18	33.40 mm x 4.55 mm	SA-106	B/K03006	B7
2.8 / N8	ASME-B36.10 01/18	48.30 mm x 5.08 mm	SA-106	B/K03006	B8
2.9 / N9	ASME-B36.10 01/18	26.70 mm x 3.91 mm	SA-106	B/K03006	B9



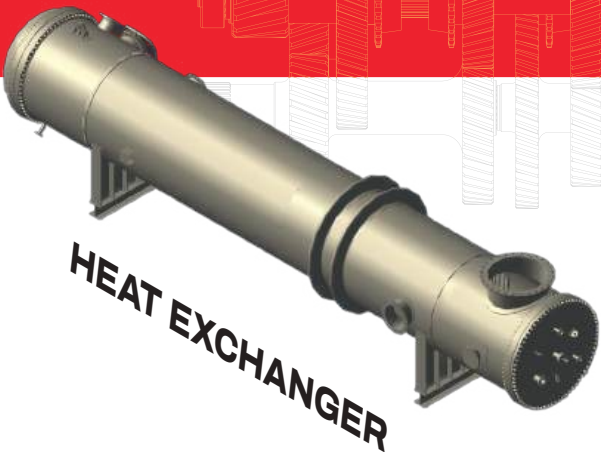
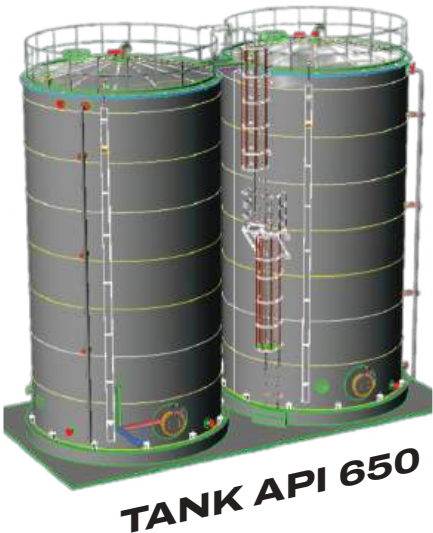
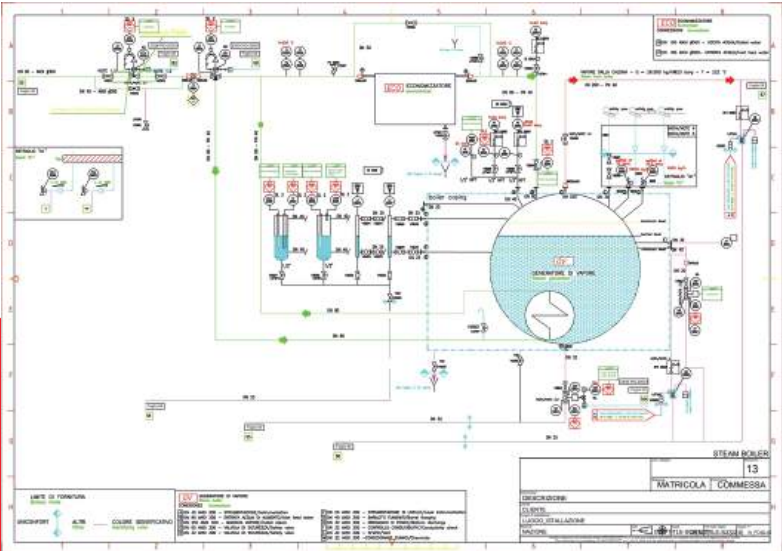
STRENGTH CALCULATION AND DESIGN ACCORDING TO INTERNATIONAL STANDARDS.



SHOP DRAWING

PRESSURE VESSELS

PFD AND P&ID
PROCESS DESIGN



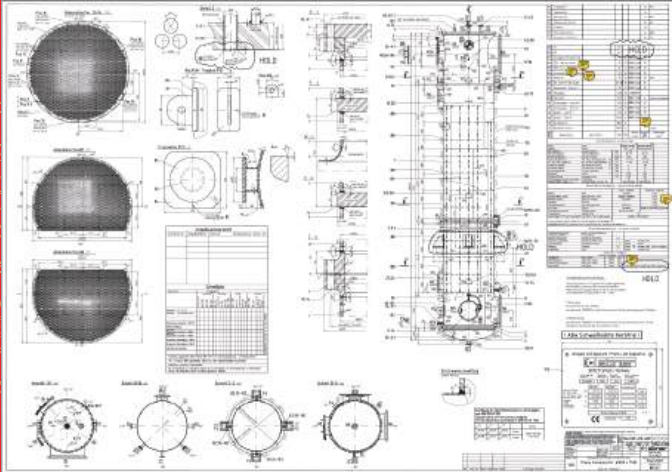
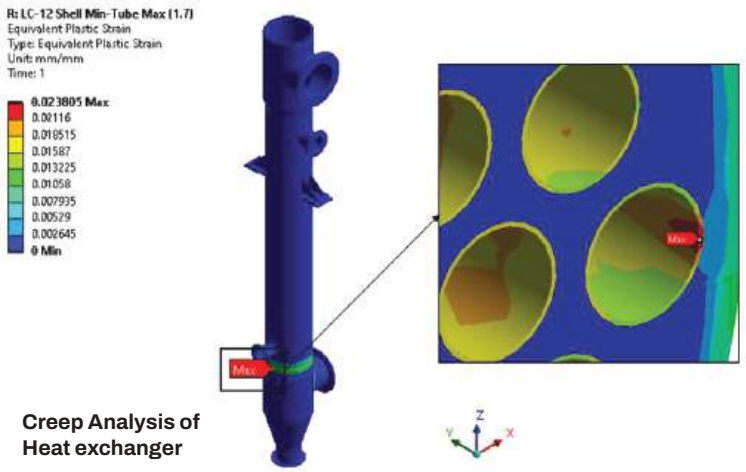
3D

PRESSURE VESSEL
CONTAINING CHLORINE
FOR OIL REFINERY

MODEL DESIGN

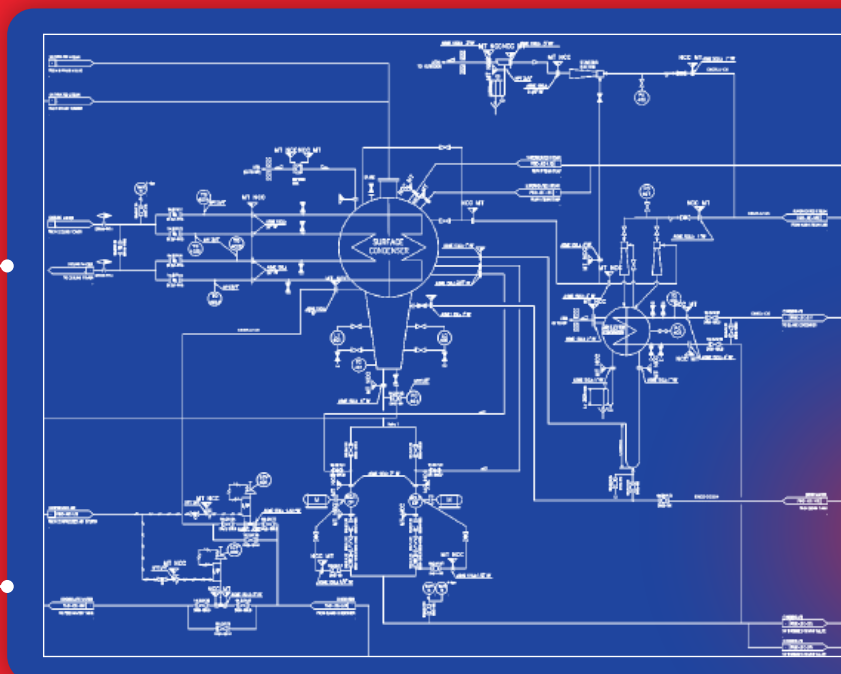
STRENGTH ANALYSIS

SHOP DRAWING

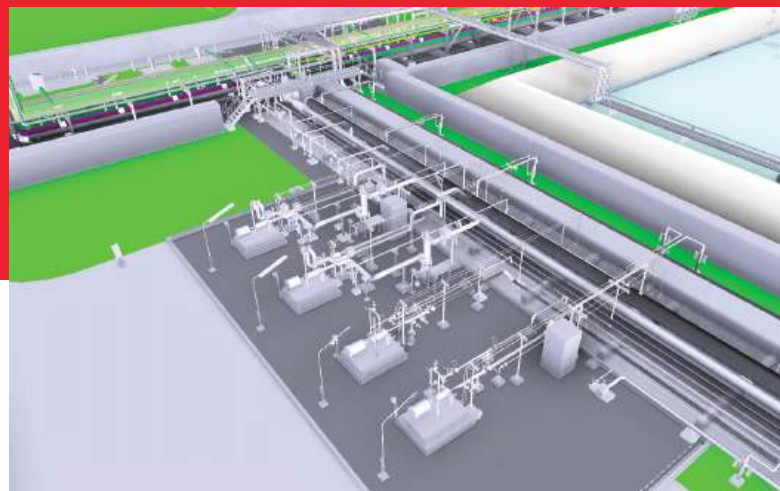


PIPELINE SYSTEM

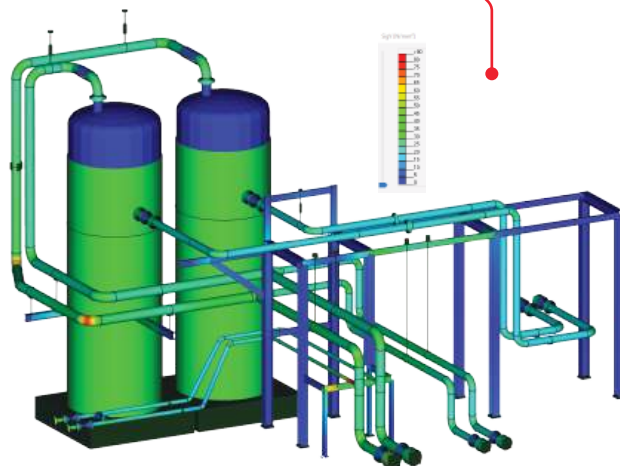
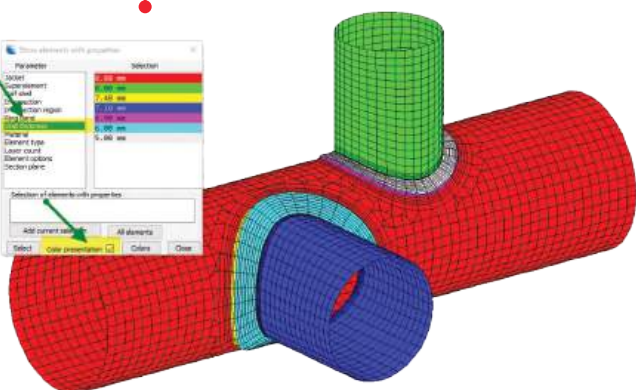
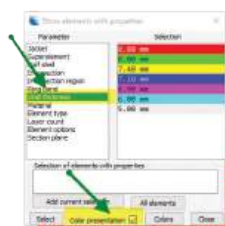
DESIGN
THE PFD
AND P&ID



3D MODEL
DESIGN

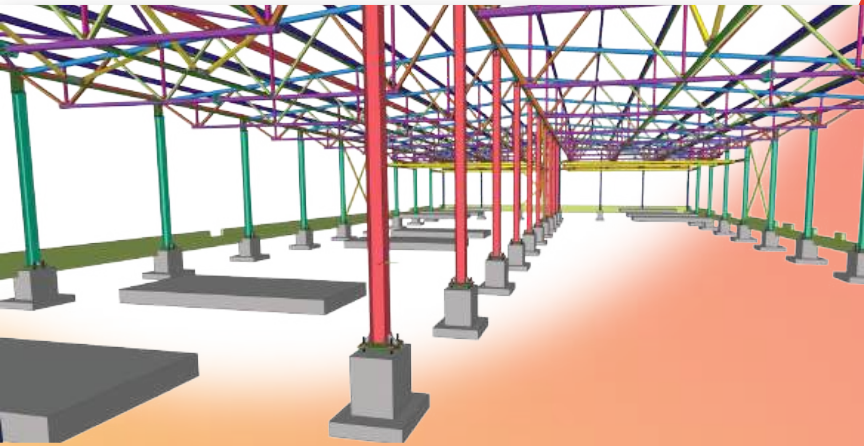


Strength calculation according to **ASME** Section
B31.1, **CE** mark **PED** 2014/68/EU, **EN** 13480,...

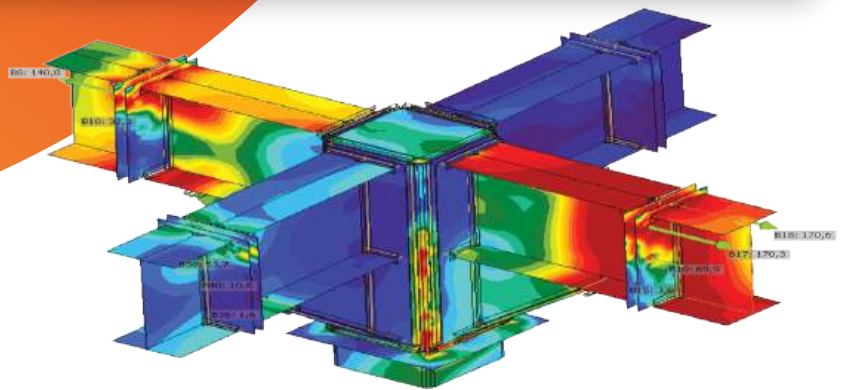
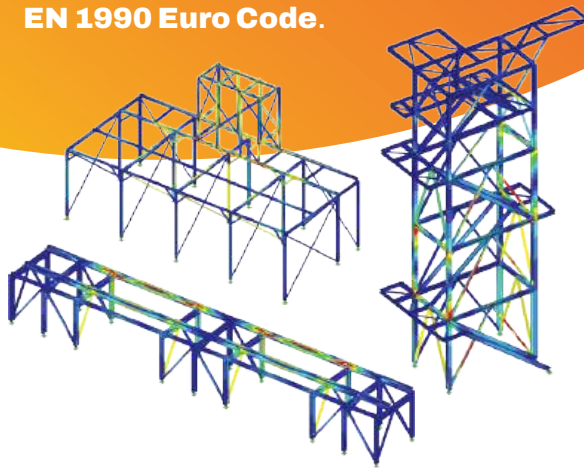


STEEL STRUCTURE

3D MODEL SIMULATION



Strength calculation according to **AISC 360 - 16, ASCE, CPR 305/ EN 1090, EN 1990 Euro Code.**



SYSTEM EVALUATION AND CERTIFICATION SERVICES

Composing Quality Manuals for your factories.

Consulting on design calculations, participating in certification assessment, and re-assessment of ASME U and U2.

Providing expert calculations and certification assessment services for pressure equipment obtaining the CE mark.

Providing expert calculations and certification assessment services for steel structures obtaining the CE Mark according to CPR 305/2011/EU, EN 1090, ISO 3834.



FACTORY AUDIT AND SUPERVISION

Evaluate the capabilities of manufacturers and provide preliminary assessment reports for investors and buyers.

Monitor production stages according to the **Inspection Test & Plan (ITP)**, including:



DRAWINGS APPROVAL

*PS APPROVAL PRE-PRODUCTION

**PS: Process Specifications*



MATERIAL INSPECTIONS

FACTORY ACCEPTANCE TEST (FAT) BEFORE DELIVERY



ENGINEERING AND CONSTRUCTION





PRE - SALES SERVICE

Technical Consulting
Design Solutions
Offer Quotations
Factory Inspection



IN - SALES SERVICE

Quality Assurance
Factory Inspection
On - time Delivery



AFTER - SALES SERVICE

Remote Guidance
Equipment Repair

Our core competencies include meticulous technical documentation, strategic material procurement, and efficient manufacturing. We draft and review project requirements, ensure seamless supply chain operations, and maintain stringent quality standards to drive project success.

COMPILE TECHNICAL DOCUMENTS

TECHNICAL DOCUMENTS

- Technical Standards
- Inspection and Test Plans (ITPs)
- Procedure Qualification Records (PQR)
- Welding Procedure Specifications (WPS)
- Production Processes and Flowcharts
- Procurement Monitoring Report (PMR)
- Procurement Specifications (PS)



PROCUREMENT

FABRICATION AND INSTALLATION



CERTIFICATION

Certifying welders and machinists to ensure skilled craftsmanship.

SUBCONTRACTOR/ FACTORY AUDITION

Choosing qualified subcontractors.



PRODUCTION SUPERVISION

Ensuring timely and quality production.

Prebecc also provides manufacturing services for a wide range of industrial equipment.
Our capabilities include:

STORAGE TANKS AND PRESSURE VESSELS

Fabrication of durable storage solutions tailored to your specific requirements.



HEAT EXCHANGERS

Producing efficient heat exchangers for various industrial applications.

CONVEYING AND FEEDING EQUIPMENT

Optimizing the fuel transport chain increases your system's productivity.

PVC CONVEYOR



RUBBER CONVEYOR



ROLLER CONVEYOR



CHAIN CONVEYOR



STANDS CONVEYOR



SCREW CONVEYOR



PROJECT MANAGEMENT



Prebecc Co., Ltd. provides expert project management services to oversee the planning, execution, and delivery of your projects. Our dedicated project managers coordinate resources, monitor progress, and mitigate risks to ensure projects are completed on time, within budget, and to the highest standards of quality.

THE 7 CORE R E

**INTEGRATION
MANAGEMENT**

**SCOPE
MANAGEMENT**

**SCHEDULE
MANAGEMENT**

**COST
MANAGEMENT**

**QUALITY
MANAGEMENT**

**RESOURCE
MANAGEMENT**

**COMMUNICATIONS
MANAGEMENT**

**RISK
MANAGEMENT**

**PROCUREMENT
MANAGEMENT**

**STAKEHOLDER
MANAGEMENT**



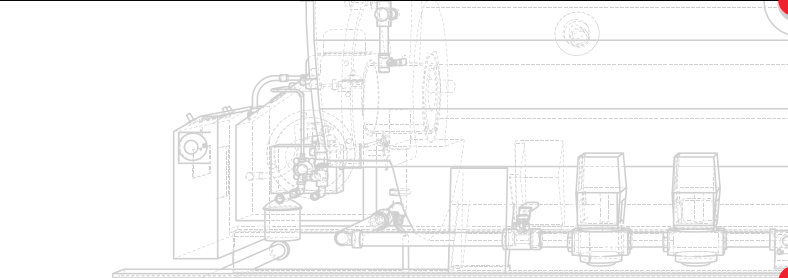


MAINTENANCE SERVICE

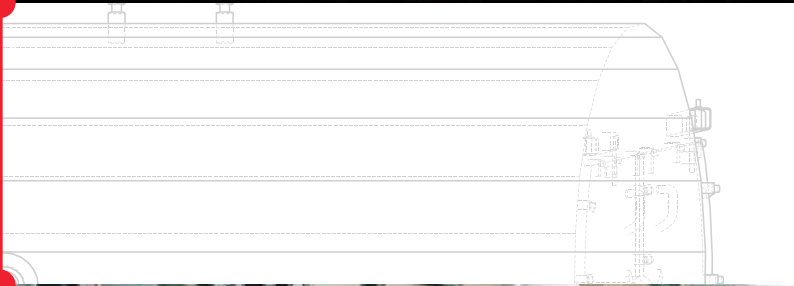
Our experienced **"BOILER DOCTORS"** conduct thorough inspections of boilers, pressure equipment, and related devices, such as:



Condition of welds, valves, and safety equipment



Thickness and corrosion of tubes



Water supply systems and water softeners

DETAILED REPORTING



Provide comprehensive and clear reports on the current condition of the boiler, including images and measurement data.

EXPERT CONSULTATION & OPTIMAL SOLUTIONS



Professional Recommendations:

Provide specific recommendations for efficient and safe boiler operation.

Energy-Saving Solutions:

Propose technical measures to reduce fuel consumption and operating costs.

Upgrades and Repairs:

Advise on upgrades and repairs to extend the lifespan and improve the efficiency of boilers.

PERIODIC SAFETY INSPECTIONS

Conduct regular safety checks to ensure compliance with safety standards.



TRAINING

Organize training sessions on the safe operation of boilers and pressure equipment for operators.



ACCIDENT PREVENTION

Recommend preventive measures to ensure the safety of personnel and equipment.



**STABLE
OPERATION**



**INCREASED
EFFICIENCY**



**COST
SAVINGS**



**LEGAL
COMPLIANCE**

WHY CHOOSE PREBECC?

**SAFETY
FIRST**

**FOCUS
ON QUALITY
ASSURANCE**

**ADHERENCE
TO INDUSTRY
REGULATIONS**

**DETAILED
PLANNING
AND ANALYSIS**

**COMPREHENSIVE
CONSULTATION**

At Prebecc, we prioritize safety, compliance, consultation, planning, and quality assurance in all our operations. With a strong emphasis on safety awareness and rigorous adherence to regulations like ASME and CE standards, we ensure a secure work environment and legal compliance. Our approach begins with detailed client consultations to tailor solutions, followed by meticulous planning and quality control measures to deliver reliable and high-performance outcomes across all project phases.



OUR REFERENCES





PRESSURE VESSELS



**ACECOOK VIETNAM
JOINT STOCK COMPANY**

STORAGE TANK

Dimension: OD3000 x H23000 x 5mm

COMPRESSED AIR TANK

Pressure: 6 bar



DA LAT MILK JOINT STOCK COMPANY

STORAGE TANK

Dimension: OD2800x10500x5mm, 100 m³



KOREAN CHEMICAL FACTORY

HEAT EXCHANGER

Working Pressure: 4 bar

FUEL SUPPLY AND TRANSPORTATION SYSTEM



**FATA VIET LIVESTOCK
COMPANY LIMITED**

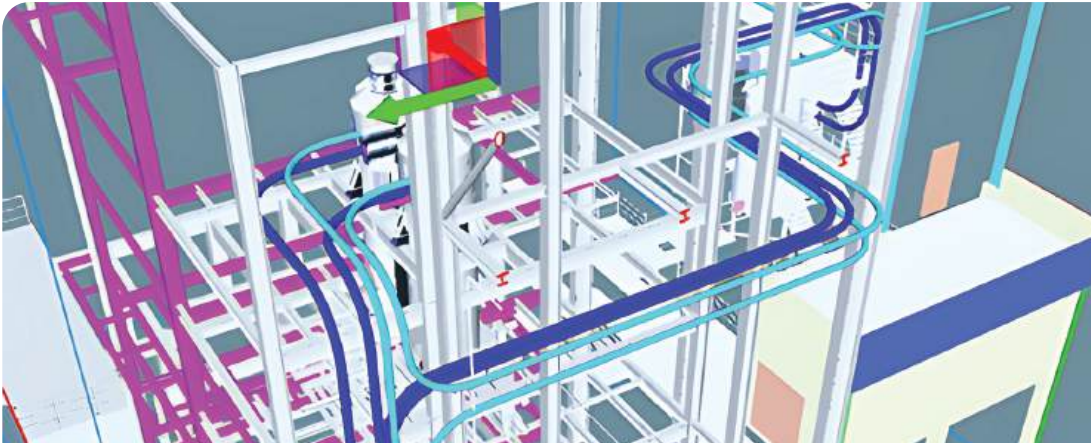


**TRINH DANG KHOI
COMPANY LIMITED.**



**BINH DUONG WATER -
ENVIRONMENT JSC**

SERVICES



**NESTLÉ BIEN HOA,
DONG NAI**

Designed for upgrading
steam supply piping
systems.



**KOREAN STEEL
MANUFACTURING
FACTORY**

Survey and propose
solutions to improve
boiler performance.



**OLAM AGRI
VIETNAM**

Evaluate the boiler
working situation and
propose solutions.



PREBECC
WE BUILD YOUR PLANT

PREBECC COMPANY LIMITED

Office: 359 Nguyen Van Tang, Long Binh Ward, Ho Chi Minh City

Factory: 80 street, Toc Tien IP, Chau Pha Commune, Ho Chi Minh City

Hotline: (+84) 7 08 09 10 33

Email: info@prebecc.com



www.prebecc.com